

TYPICAL DETAIL - PAVEMENT STAGE CONSTRUCTION

As Built 1972

MAINE STATE HIGHWAY COMMISSION
AUGUSTA, MAINE

PROFILE

I-295
STA. 95+00 TO STA. 110+00

HOWARD, NEEDLES, TAMMEN & BERGENDOFF
CONSULTING ENGINEERS

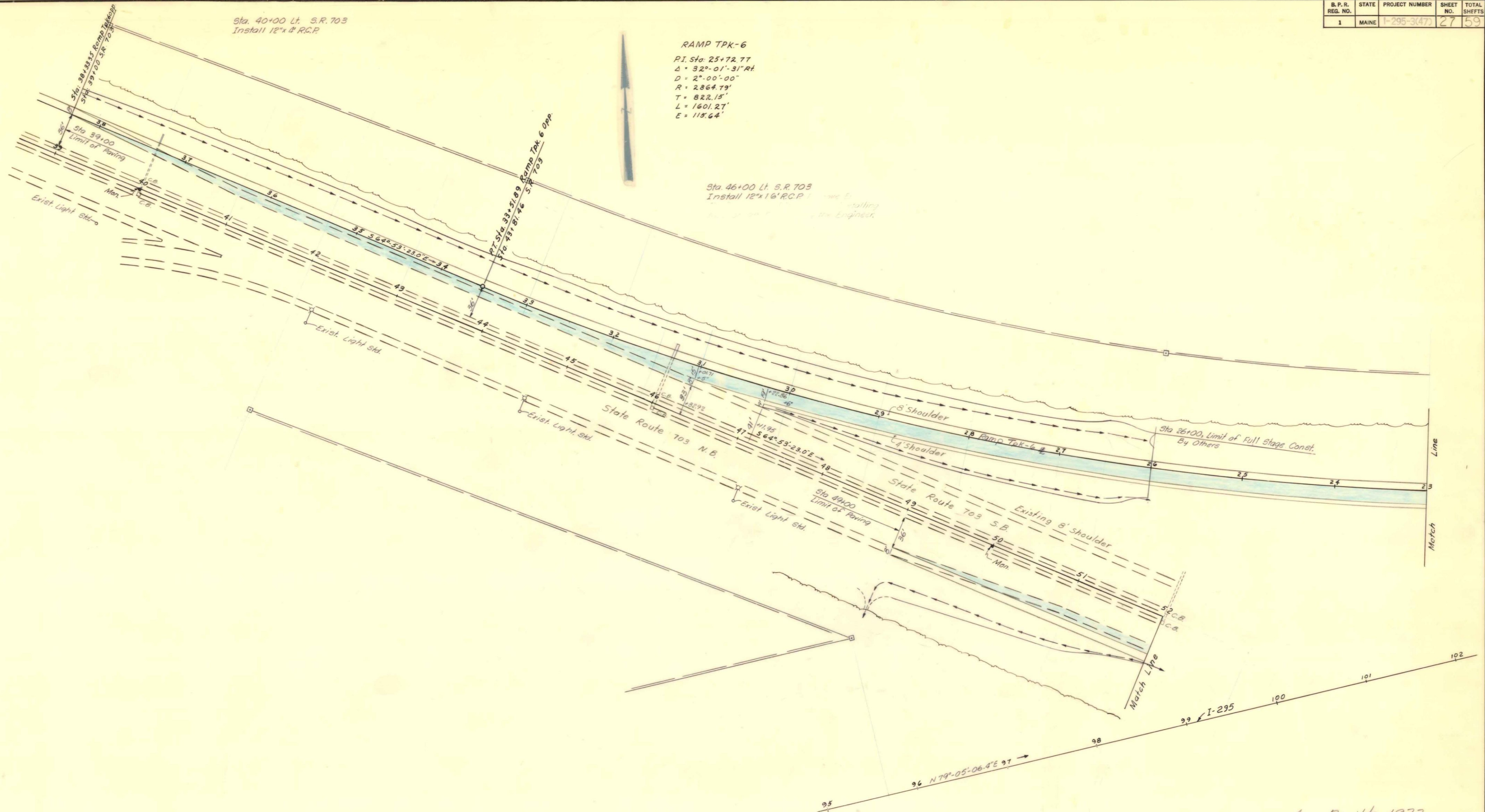
NEW YORK BOSTON KANSAS CITY

Sta. 40+00 Lt. S.R. 703
Install 12"x14" R.C.P.

RAMP TPK-6
P.I. Sta. 25+72.77
 $\Delta = 32^{\circ}-01'-31''$ Rt
 $D = 2^{\circ}-00'-00''$
 $R = 2864.79'$
 $T = 822.15'$
 $L = 1601.27'$
 $E = 115.64'$

Sta. 46+00 Lt. S.R. 703
Install 12"x16" R.C.P.

See E. Walling
for Engineer.



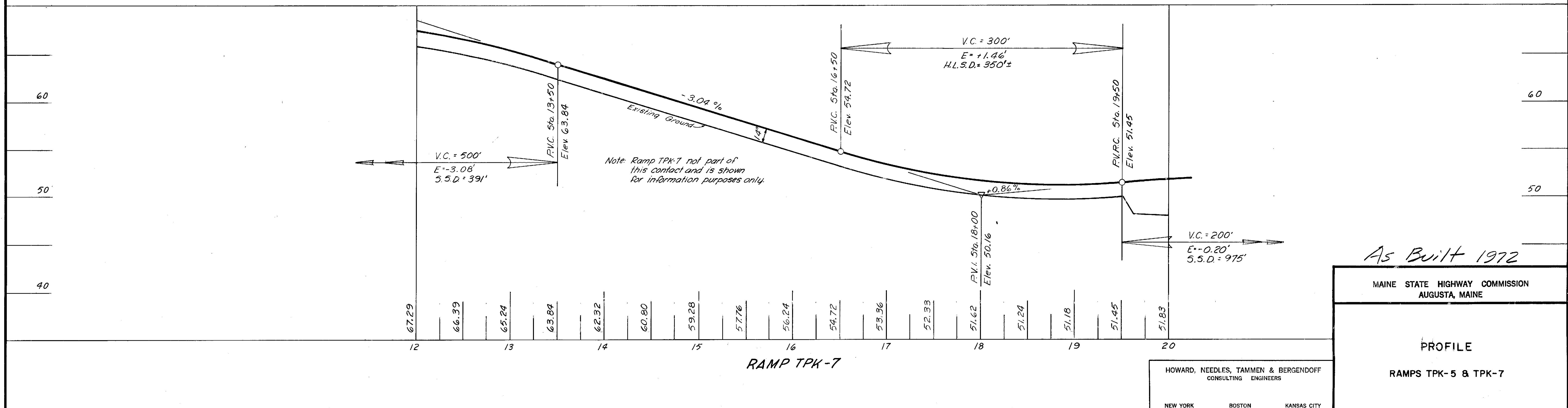
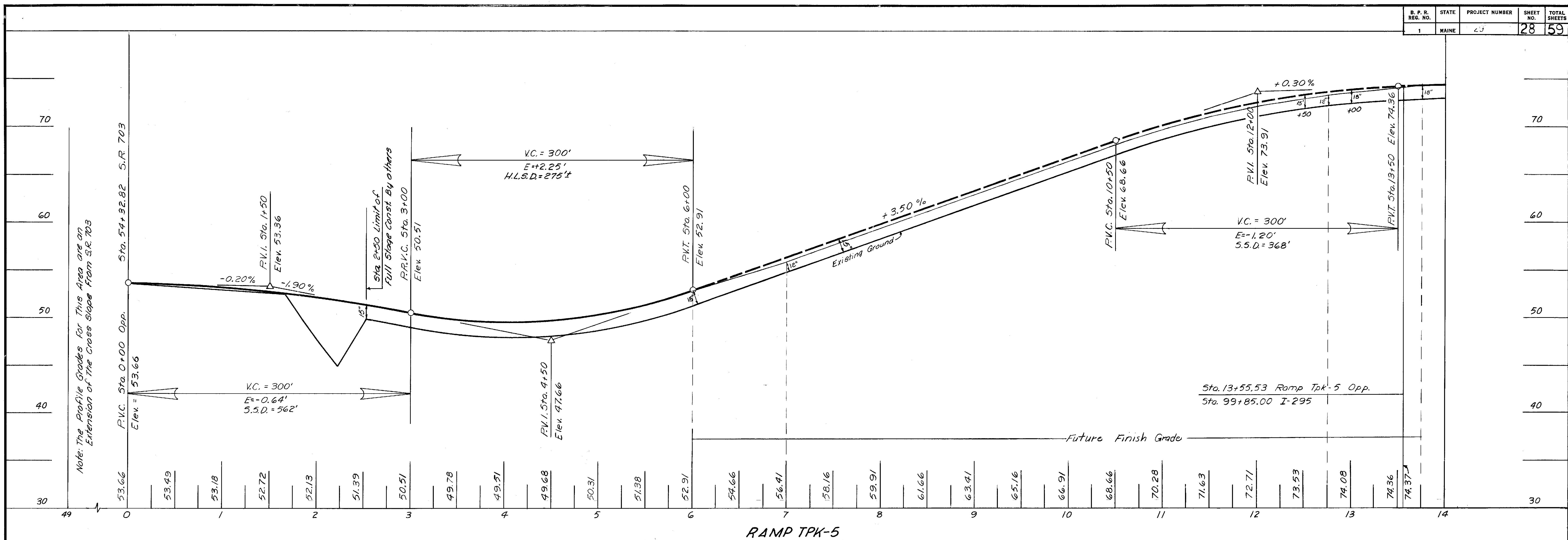
AS BUILT 1972

MAINE STATE HIGHWAY COMMISSION
AUGUSTA, MAINE

PLAN
RAMP TPK-6
STATE ROUTE 703

HOWARD, NEEDLES, TAMMEN & BERGENDOFF
CONSULTING ENGINEERS

NEW YORK BOSTON KANSAS CITY



As Built 1972

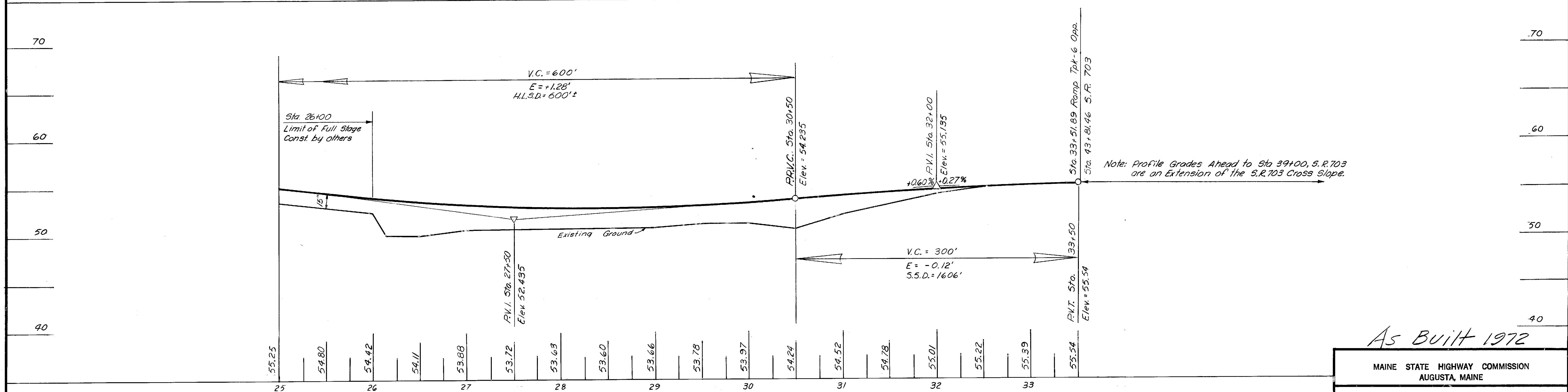
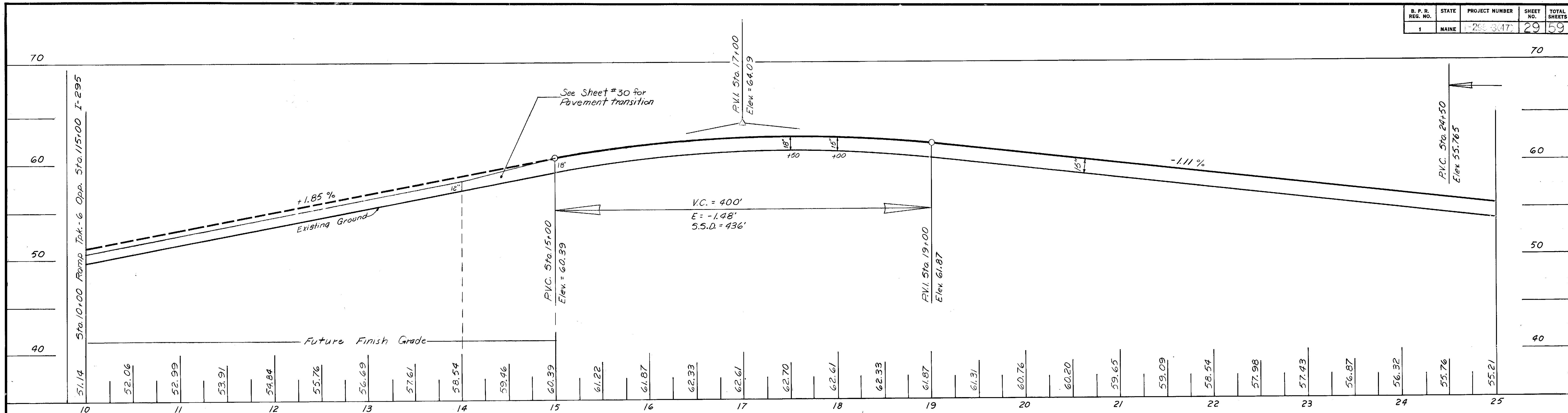
MAINE STATE HIGHWAY COMMISSION
AUGUSTA, MAINE

PROFILE

RAMPS TPK-5 & TPK-7

HOWARD, NEEDLES, TAMMEN & BERGENDOFF
CONSULTING ENGINEERS

NEW YORK BOSTON KANSAS CITY



As Built 1972

MAINE STATE HIGHWAY COMMISSION
AUGUSTA, MAINE

PROFILE

RAMP TPK-6

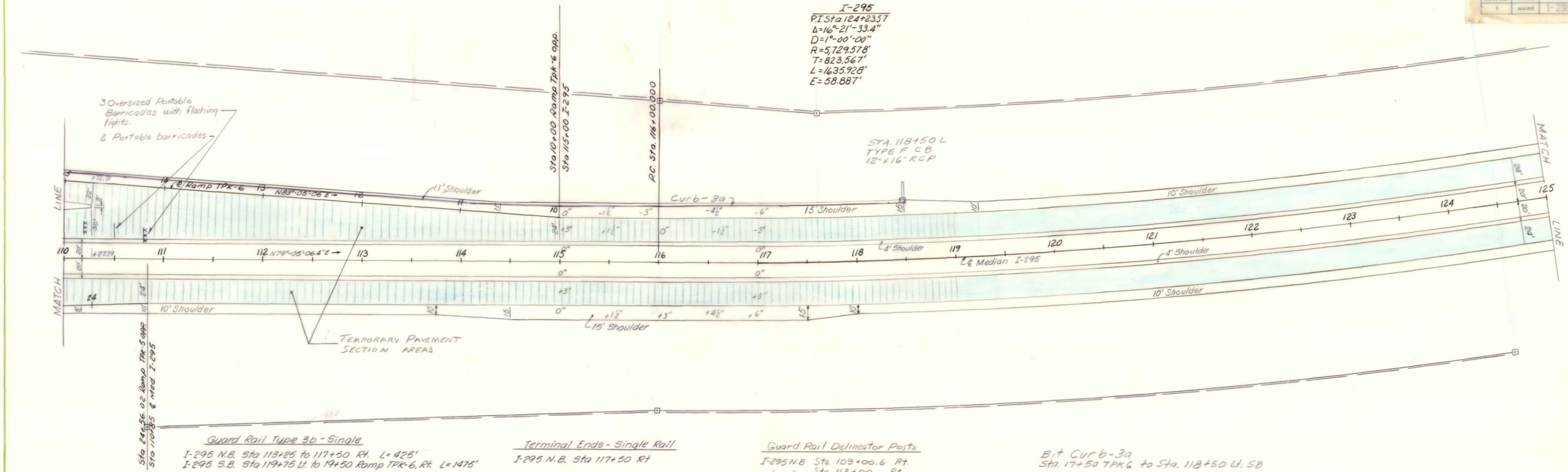
HOWARD, NEEDLES, TAMMEN & BERGENDOFF
CONSULTING ENGINEERS

NEW YORK BOSTON KANSAS CITY

PLAN
DATE
BY
SURVEYED
PLOTTED
NOTE BOOK
ALIGNMENT CHECKED
ST. OF WAY CHECKED

PROFILE
DATE
BY
SURVEYED
PLOTTED
NOTE BOOK
GRADES CHECKED
STRUCTURE NOTATIONS CHECKED

I-295
P.I. Sta. 124+23.7
 $\Delta = 16^\circ 21' - 33.4''$
 $D = 1^\circ 00' - 00''$
 $R = 5,729.378'$
 $T = 823.567'$
 $L = 1635.928'$
 $E = 58.887'$



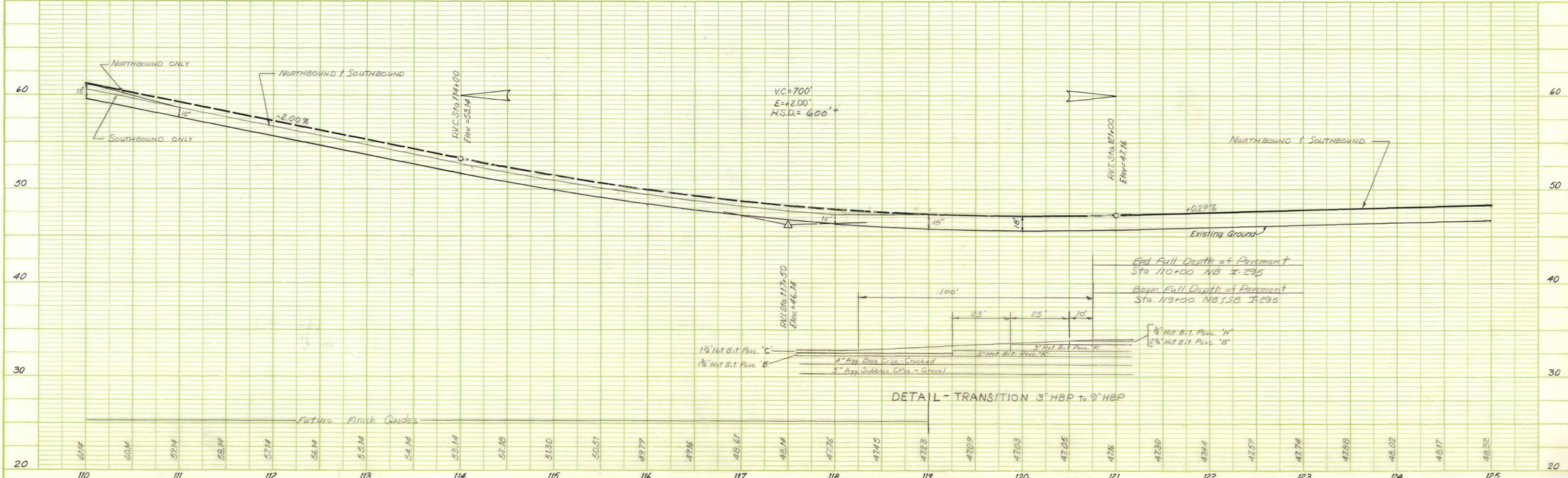
Guard Rail Type 3b - Single
I-295 N.B. Sta. 113+25 to 117+50 Rt. L=425'
I-295 S.B. Sta. 119+75 Lt. to 124+50 Ramp Tpk 6, Rt. L=1475'

Terminal Ends - Single Rail
I-295 N.B. Sta. 117+50 Rt

Guard Rail Delineator Posts
I-295 N.B. Sta. 109+00.6 Rt.
" " Sta. 113+00 Rt.
" " Sta. 117+50 Rt.
I-295 S.B. Sta. 120+00 Lt.

Bit Cur b-3a
Sta. 17+50 Tpk 6 to Sta. 118+50 Lt. SB

Twisted End Section, Guard Rail, Type 3b
I-295 N.B. Sta. 113+00 to 118+25 Rt.
I-295 S.B. Sta. 119+75 to 120+00 Lt.



1 1/4" Hot Bit. Pave. "C"
1 1/4" Hot Bit. Pave. "B"
4" App. Base Crs. - Crushed
2" App. Subbase Crs. - Gravel
3" Hot Bit. Pave. "A"
1/2" Hot Bit. Pave. "H"
1/2" Hot Bit. Pave. "B"

DETAIL - TRANSITION 3" HBP to 9" HBP

Curve (2)
 P.I. Sta. 124+23.57
 $\Delta = 16^\circ 21' 33''$ Lt.
 $D = 1^\circ 00'$
 $R = 5,729.58'$
 $T = 823.567'$
 $L = 1635.928'$
 $E = 58.887'$

Curve (3)
 P.I. Sta. 157+81.46
 $\Delta = 10^\circ 23' 03.0''$ Rt.
 $D = 1^\circ 00'$
 $R = 5,729.58'$
 $T = 520.63'$
 $L = 1,038.42'$
 $E = 23.61'$

Curve (4)
 P.I. Sta. 144+87.36
 $\Delta = 75^\circ 54' 19.4''$ Lt.
 $D = 6^\circ 15'$
 $R = 916.73'$
 $T = 715.01'$
 $L = 1,214.49'$
 $E = 245.87'$

Curve (5)
 P.I. Sta. 148+84.75
 $\Delta = 31^\circ 09' 13.7''$ Lt.
 $D = 4^\circ 00'$
 $R = 1,432.39'$
 $T = 399.31'$
 $L = 778.84'$
 $E = 54.62'$

Curve (6)
 P.I. Sta. 141+88.39
 $\Delta = 14^\circ 56' 16.3''$ Lt.
 $D = 2^\circ 30'$
 $R = 2,291.83'$
 $T = 300.46'$
 $L = 597.51'$
 $E = 19.61'$

Terminal Ends, Single Rail

I-295 N.B. Sta. 130+50 Lt.
 I-295 S.B. Sta. 129+00 Rt.
 Rte. 1 Conn. N.B. Sta. 144+94.8 Rt.

Guard Rail Delineator Posts

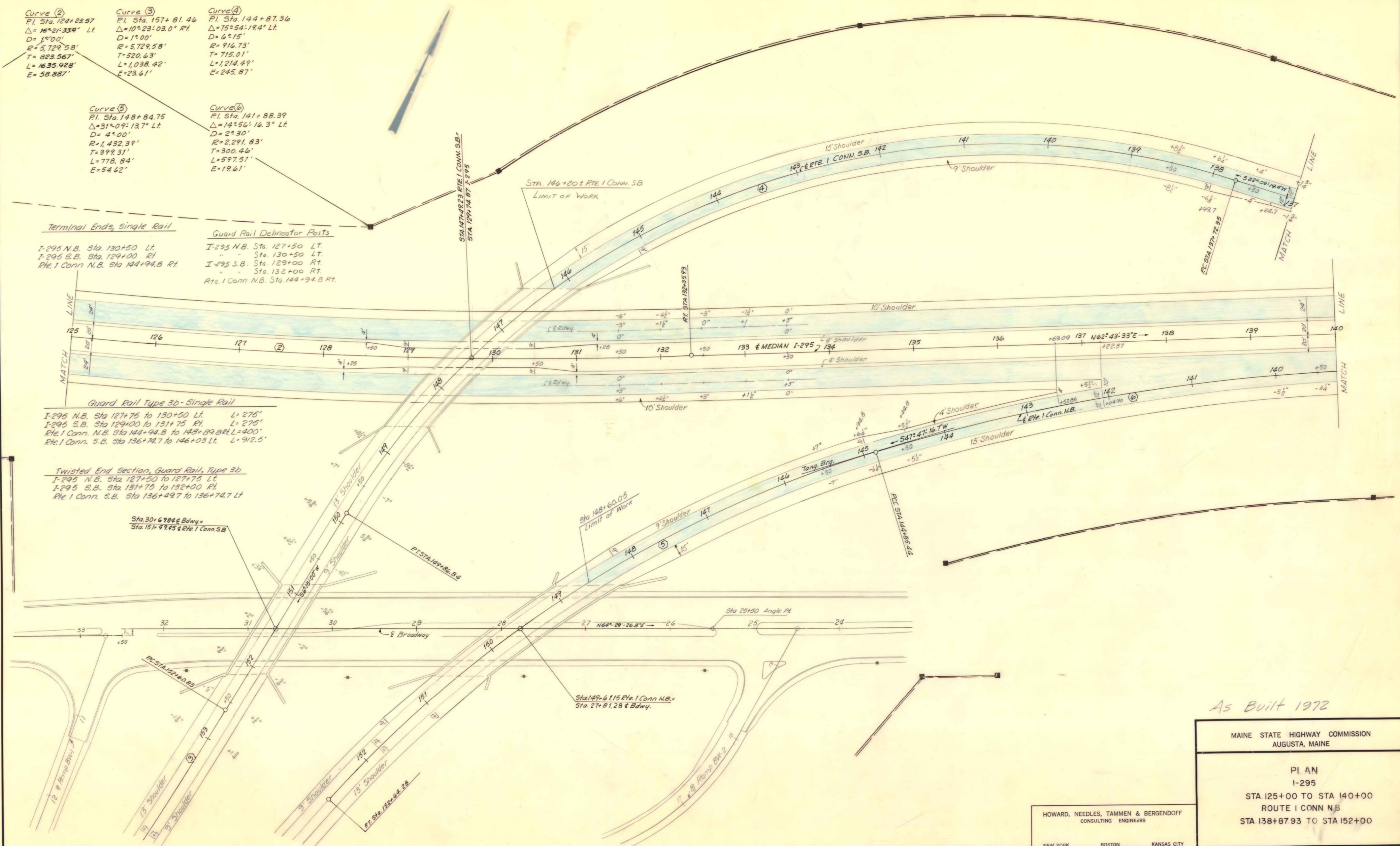
I-295 N.B. Sta. 127+50 Lt.
 " Sta. 130+50 Lt.
 I-295 S.B. Sta. 129+00 Rt.
 " Sta. 132+00 Rt.
 Rte. 1 Conn. N.B. Sta. 144+94.8 Rt.

Guard Rail Type 3b - Single Rail

I-295 N.B. Sta. 127+75 to 130+50 Lt. $L = 275'$
 I-295 S.B. Sta. 129+00 to 131+75 Rt. $L = 275'$
 Rte. 1 Conn. N.B. Sta. 144+94.8 to 149+89.8 Rt. $L = 400'$
 Rte. 1 Conn. S.B. Sta. 136+74.7 to 146+03 Lt. $L = 912.5'$

Twisted End Section, Guard Rail, Type 3b

I-295 N.B. Sta. 127+50 to 127+75 Lt.
 I-295 S.B. Sta. 131+75 to 132+00 Rt.
 Rte. 1 Conn. S.B. Sta. 136+49.7 to 136+74.7 Lt.



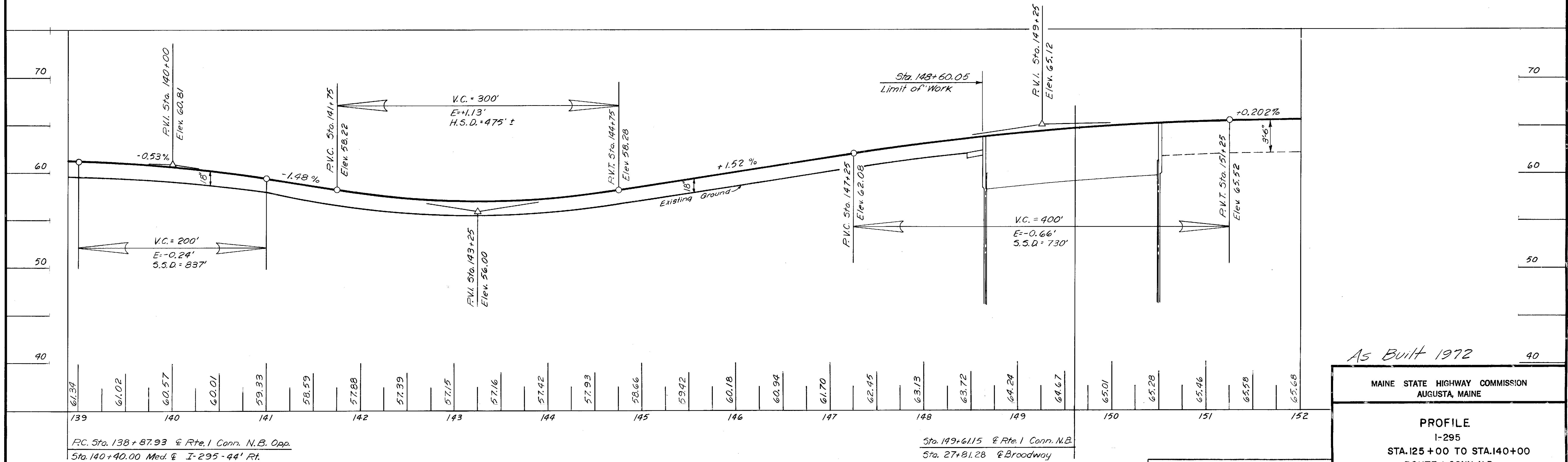
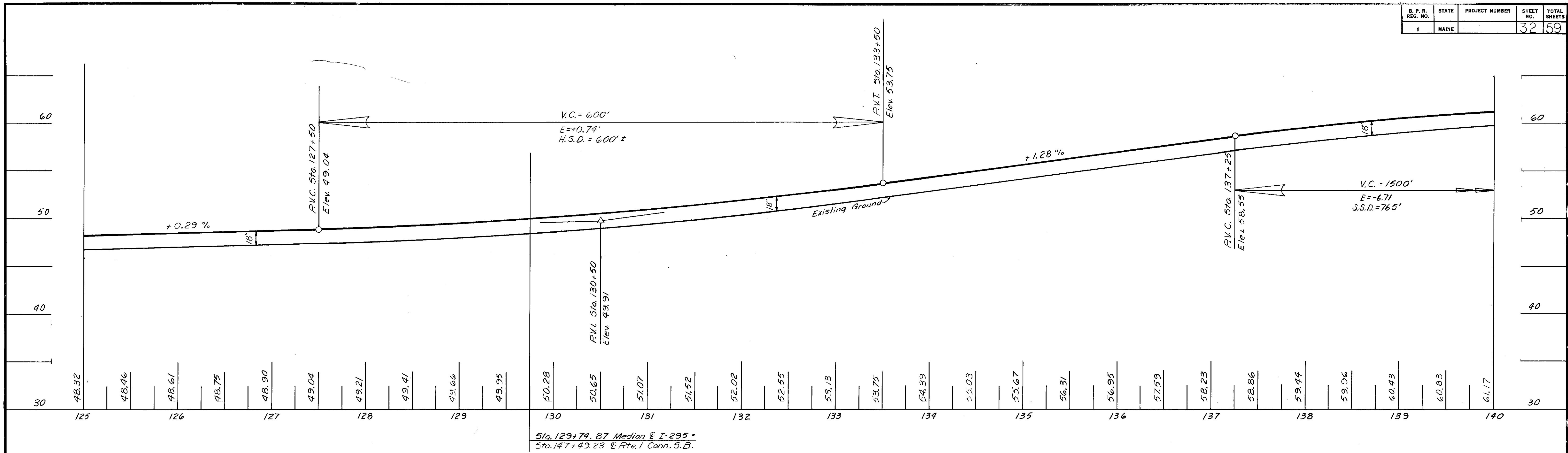
As Built 1972

MAINE STATE HIGHWAY COMMISSION
 AUGUSTA, MAINE

PLAN
 I-295
 STA. 125+00 TO STA. 140+00
 ROUTE 1 CONN. N.B.
 STA. 138+87.93 TO STA. 152+00

HOWARD, NEEDLES, TAMMEN & BERGENDOFF
 CONSULTING ENGINEERS

NEW YORK BOSTON KANSAS CITY

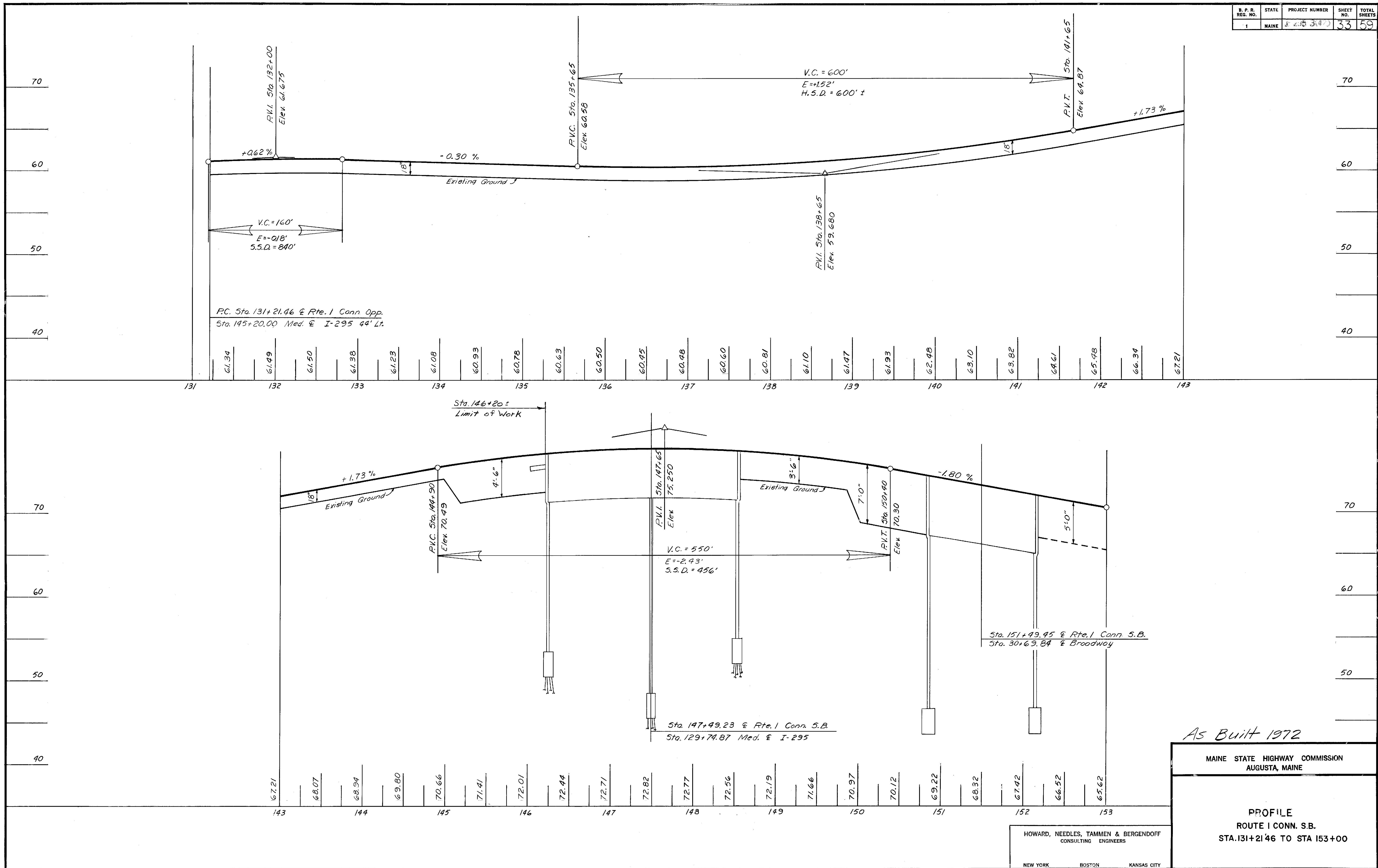


As Built 1972

MAINE STATE HIGHWAY COMMISSION
AUGUSTA, MAINE

PROFILE
I-295
STA. 125+00 TO STA. 140+00
ROUTE 1 CONN. N.B.
STA. 138+87.93 TO STA. 152+00

HOWARD, NEEDLES, TAMMEN & BERGENDOFF
CONSULTING ENGINEERS
NEW YORK BOSTON KANSAS CITY



As Built 1972

MAINE STATE HIGHWAY COMMISSION
AUGUSTA, MAINE

PROFILE
ROUTE 1 CONN. S.B.
STA. 131+21.46 TO STA 153+00

HOWARD, NEEDLES, TAMMEN & BERGENDOFF
CONSULTING ENGINEERS

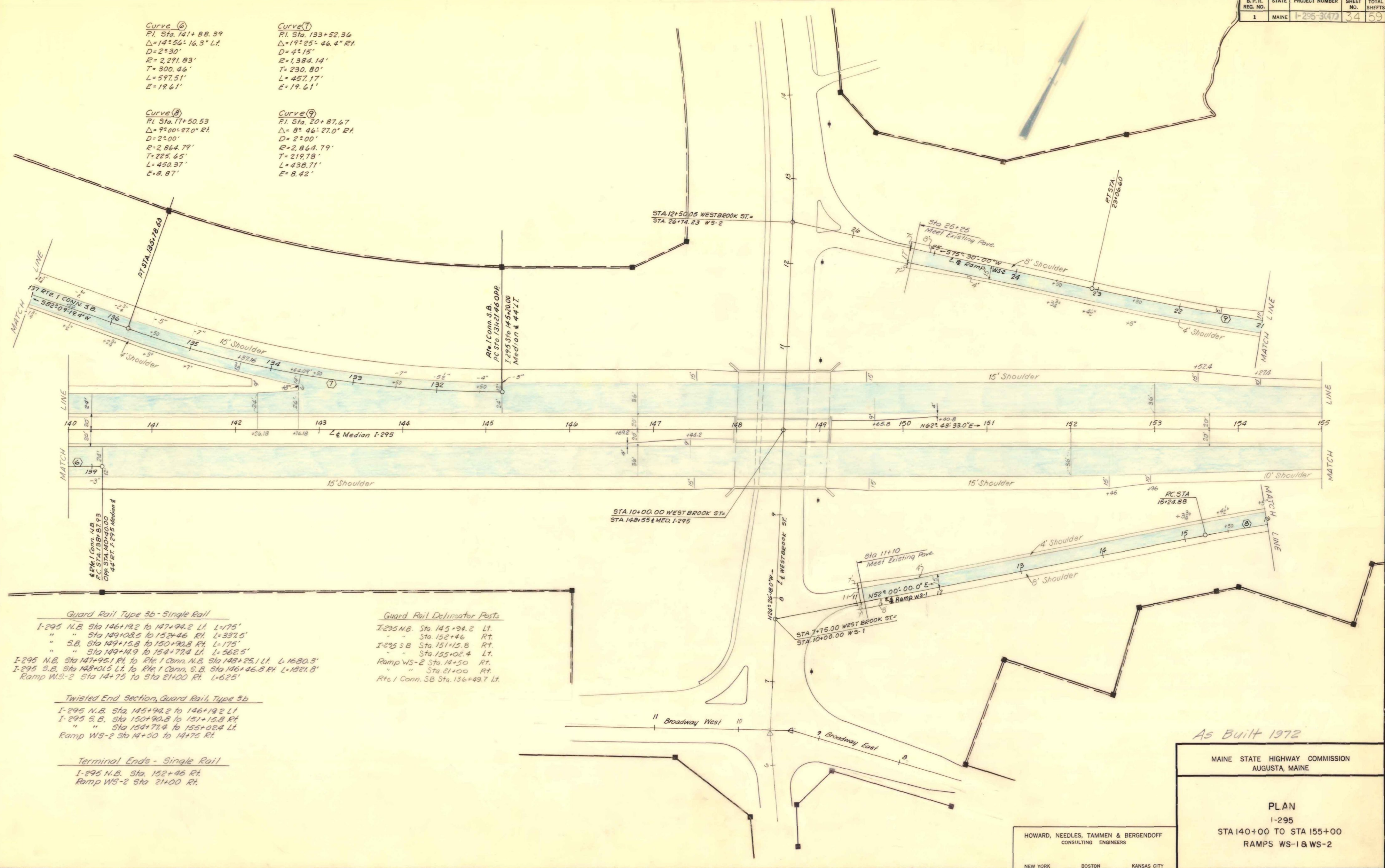
NEW YORK BOSTON KANSAS CITY

Curve (6)
 P.I. Sta. 141+88.39
 $\Delta = 14^\circ 56' 16.3''$ Lt.
 $D = 2^\circ 30'$
 $R = 2,291.83'$
 $T = 300.44'$
 $L = 597.51'$
 $E = 19.61'$

Curve (7)
 P.I. Sta. 133+52.36
 $\Delta = 19^\circ 25' 46.4''$ Rt.
 $D = 4^\circ 15'$
 $R = 1,384.14'$
 $T = 230.80'$
 $L = 457.17'$
 $E = 19.61'$

Curve (8)
 P.I. Sta. 17+50.53
 $\Delta = 9^\circ 00' 27.0''$ Rt.
 $D = 2^\circ 00'$
 $R = 2,864.79'$
 $T = 225.65'$
 $L = 450.37'$
 $E = 8.87'$

Curve (9)
 P.I. Sta. 20+87.67
 $\Delta = 8^\circ 46' 27.0''$ Rt.
 $D = 2^\circ 00'$
 $R = 2,864.79'$
 $T = 219.78'$
 $L = 438.71'$
 $E = 8.42'$



Guard Rail Type 3b - Single Rail

I-295 N.B. Sta. 146+19.2 to 147+94.2 Lt. L=175'
 " Sta. 149+08.5 to 152+46 Rt. L=337.5'
 " S.B. Sta. 149+15.8 to 150+90.8 Rt. L=175'
 " Sta. 149+14.9 to 154+77.4 Lt. L=562.5'
 I-295 N.B. Sta. 147+95.1 Rt. to Rte. 1 Conn. N.B. Sta. 148+25.1 Lt. L=1680.3'
 I-295 S.B. Sta. 148+01.5 Lt. to Rte. 1 Conn. S.B. Sta. 146+46.8 Rt. L=1321.8'
 Ramp WS-2 Sta. 14+75 to Sta. 21+00 Rt. L=625'

Twisted End Section, Guard Rail, Type 3b

I-295 N.B. Sta. 145+94.2 to 146+19.2 Lt.
 I-295 S.B. Sta. 150+90.8 to 151+15.8 Rt.
 " Sta. 154+77.4 to 155+02.4 Lt.
 Ramp WS-2 Sta. 14+50 to 14+75 Rt.

Terminal Ends - Single Rail

I-295 N.B. Sta. 152+46 Rt.
 Ramp WS-2 Sta. 21+00 Rt.

Guard Rail Delinicator Posts

I-295 N.B. Sta. 145+94.2 Lt.
 " Sta. 152+46 Rt.
 I-295 S.B. Sta. 151+15.8 Rt.
 " Sta. 155+02.4 Lt.
 Ramp WS-2 Sta. 14+50 Rt.
 " Sta. 21+00 Rt.
 Rte. 1 Conn. S.B. Sta. 136+49.7 Lt.

As Built 1972

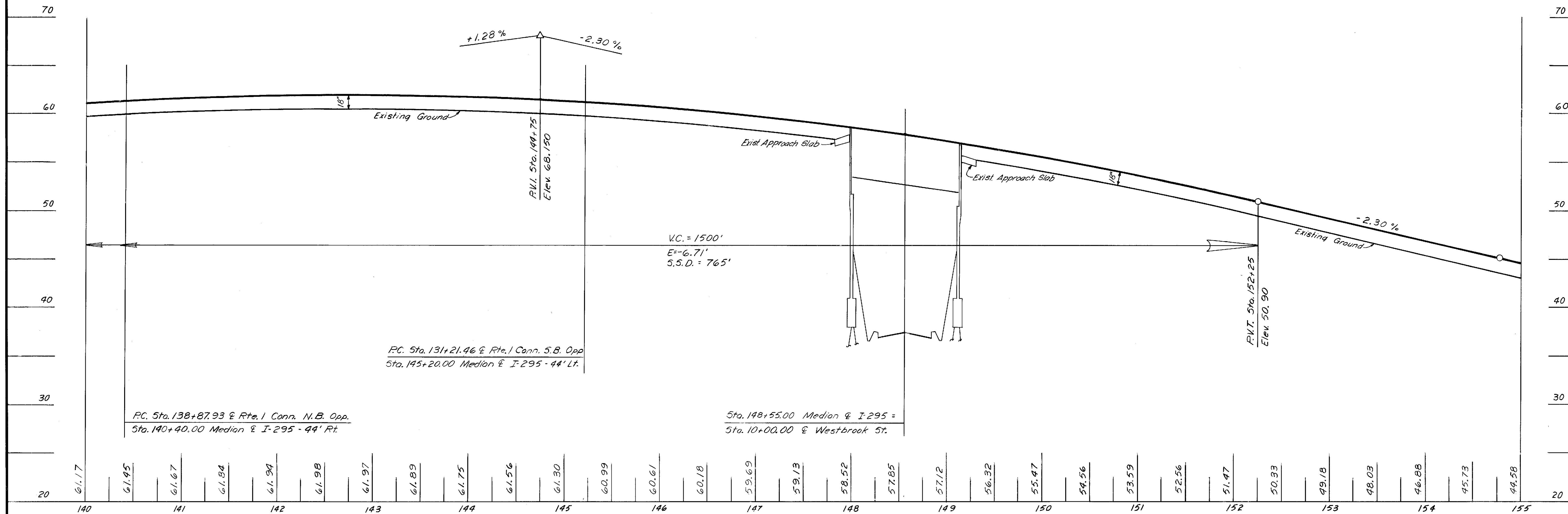
MAINE STATE HIGHWAY COMMISSION
 AUGUSTA, MAINE

PLAN

I-295
 STA 140+00 TO STA 155+00
 RAMP WS-1 & WS-2

HOWARD, NEEDLES, TAMMEN & BERGENDOFF
 CONSULTING ENGINEERS

NEW YORK BOSTON KANSAS CITY



As Built 1972

MAINE STATE HIGHWAY COMMISSION
AUGUSTA, MAINE

PROFILE
I-295
STA. 140+00 TO STA. 155+00

HOWARD, NEEDLES, TAMMEN & BERGENDOFF
CONSULTING ENGINEERS

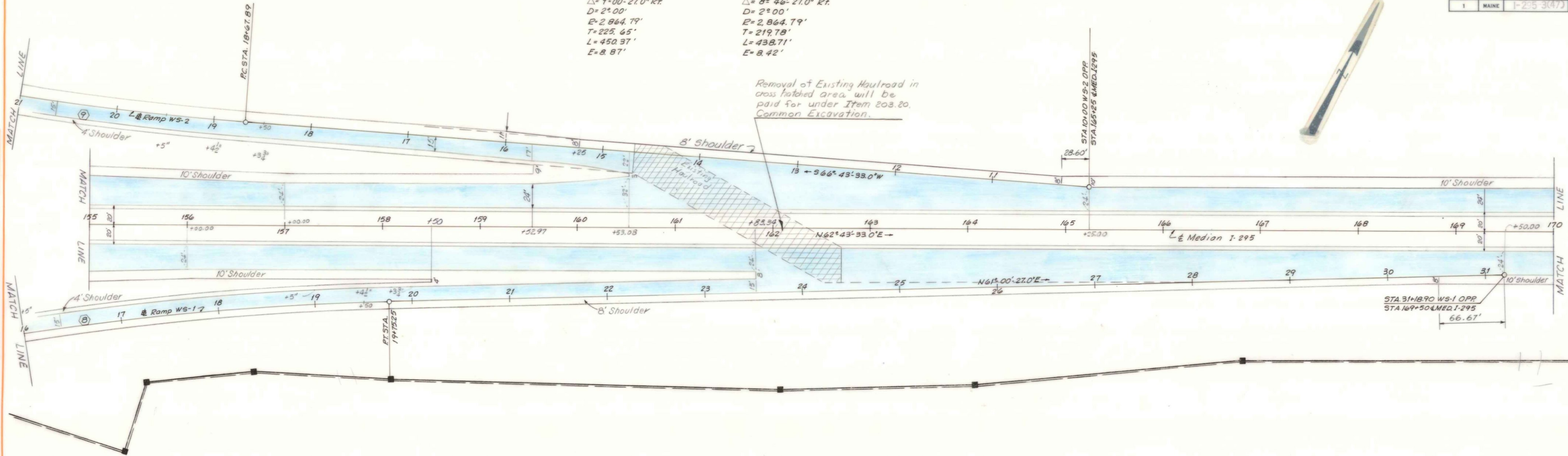
NEW YORK BOSTON KANSAS CITY

Curve (8)
 P.I. Sta 17+50.53
 $\Delta = 9^{\circ}00'27.0''$ Rt.
 $D = 2^{\circ}00'$
 $E = 2,864.79'$
 $T = 225.65'$
 $L = 450.37'$
 $E = 8.87'$

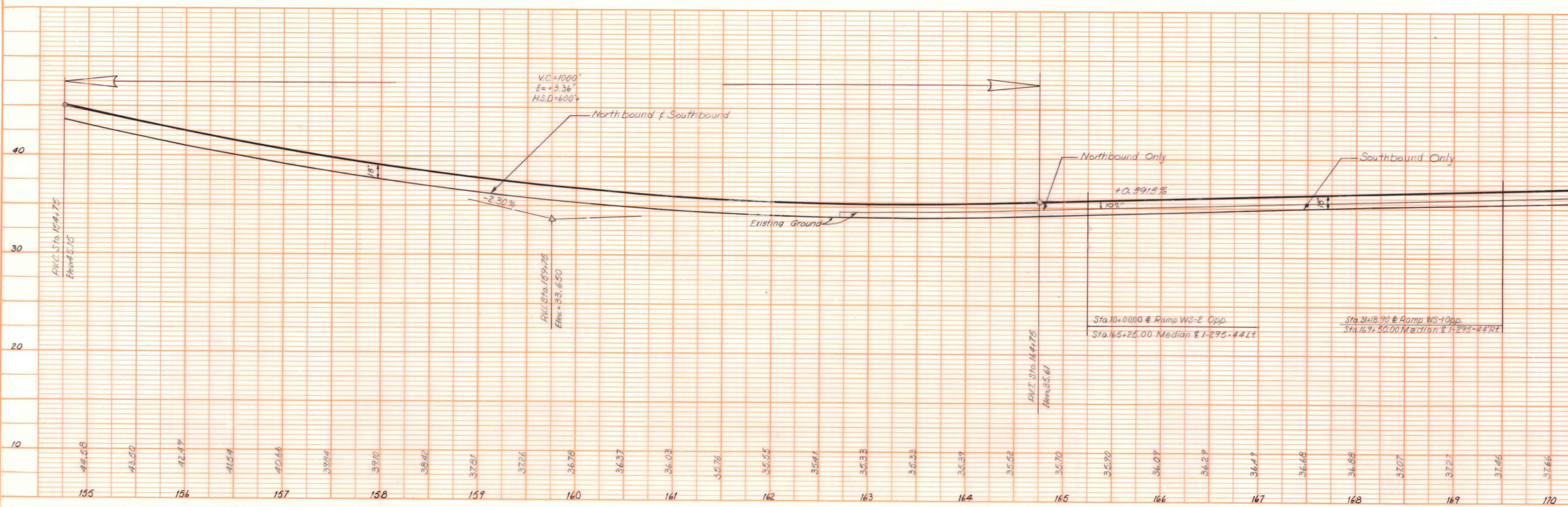
Curve (9)
 P.I. Sta 20+87.67
 $\Delta = 8^{\circ}46'27.0''$ Rt.
 $D = 2^{\circ}00'$
 $E = 2,864.79'$
 $T = 219.78'$
 $L = 438.71'$
 $E = 8.42'$

Removal of Existing Haulroad in cross hatched area will be paid for under Item 203.20, Common Excavation.

PLAN
 SHEETED
 PLATTED
 ALIGNED CHECKED
 DATE
 BY



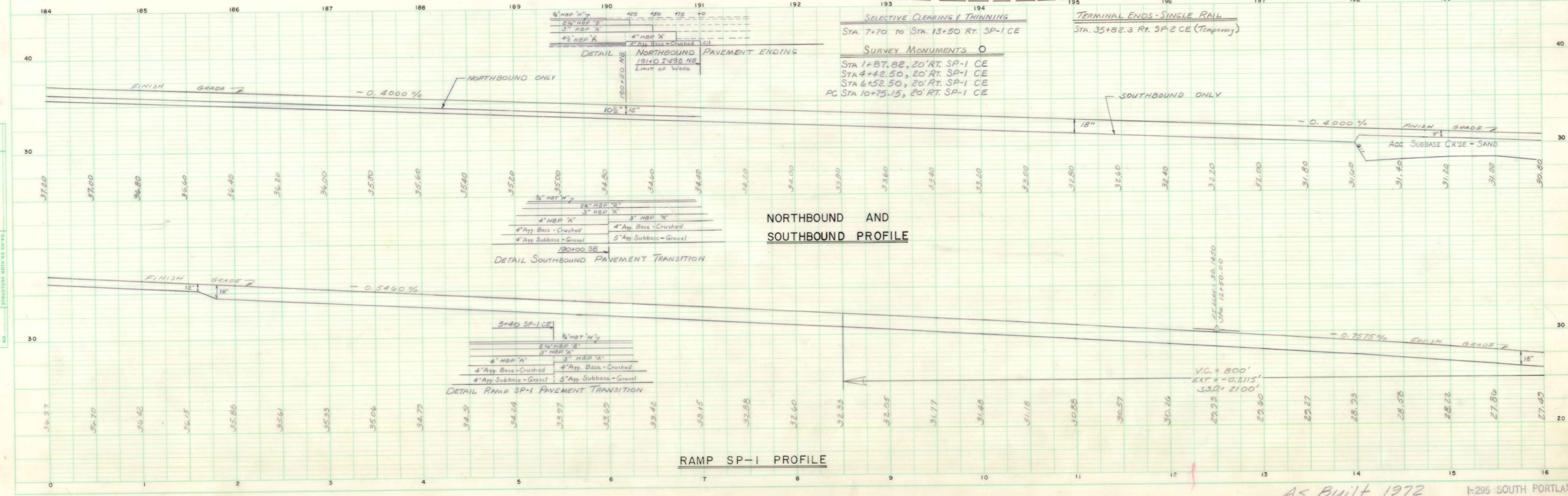
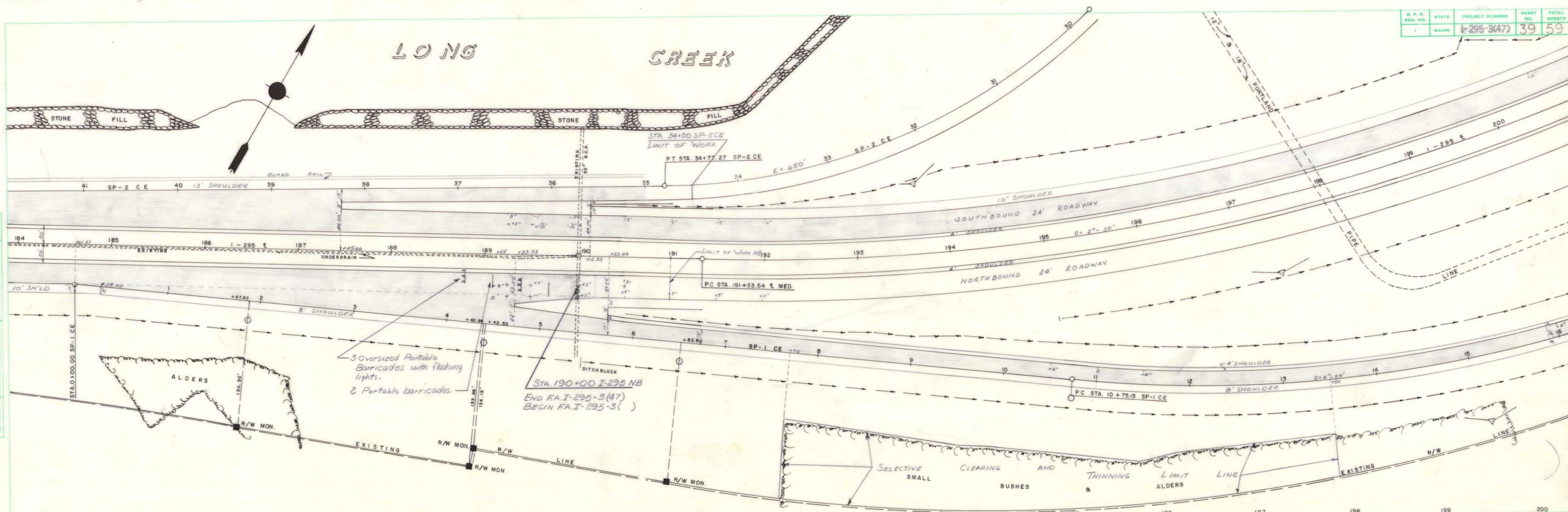
PROFILE
 SHEETED
 PLATTED
 ALIGNED CHECKED
 DATE
 BY



As Built 1972

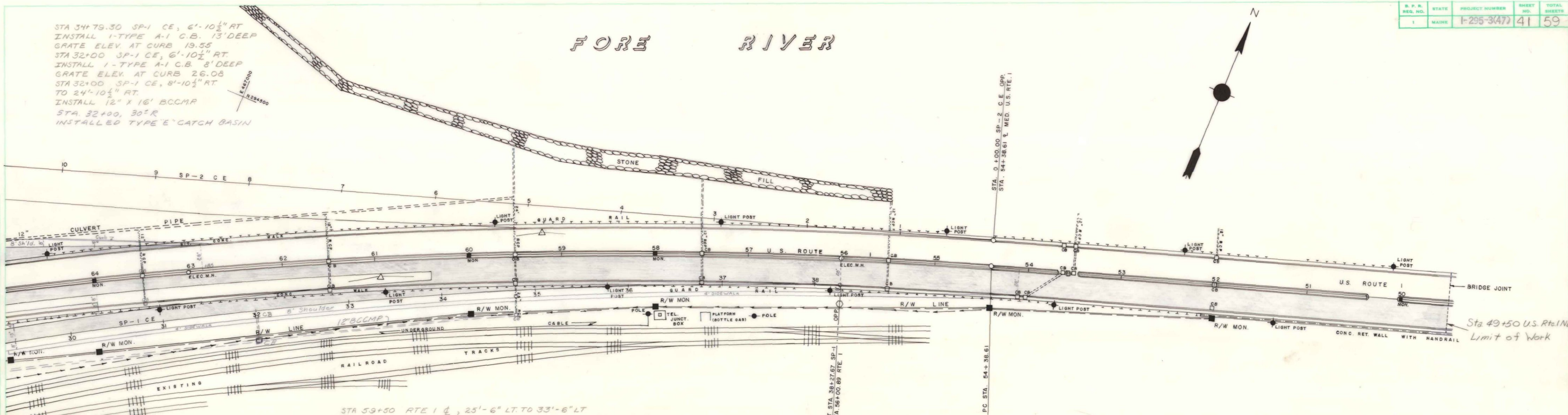
PLAN
BY
DATE
SURVEYED
PLOTTED
ALIGNED
CHECKED
NOTE BOOK
NO.

PROFILE
BY
DATE
SURVEYED
PLOTTED
N. M. NOTED
STRUCTURE NOTATIONS
NO.



FORE RIVER

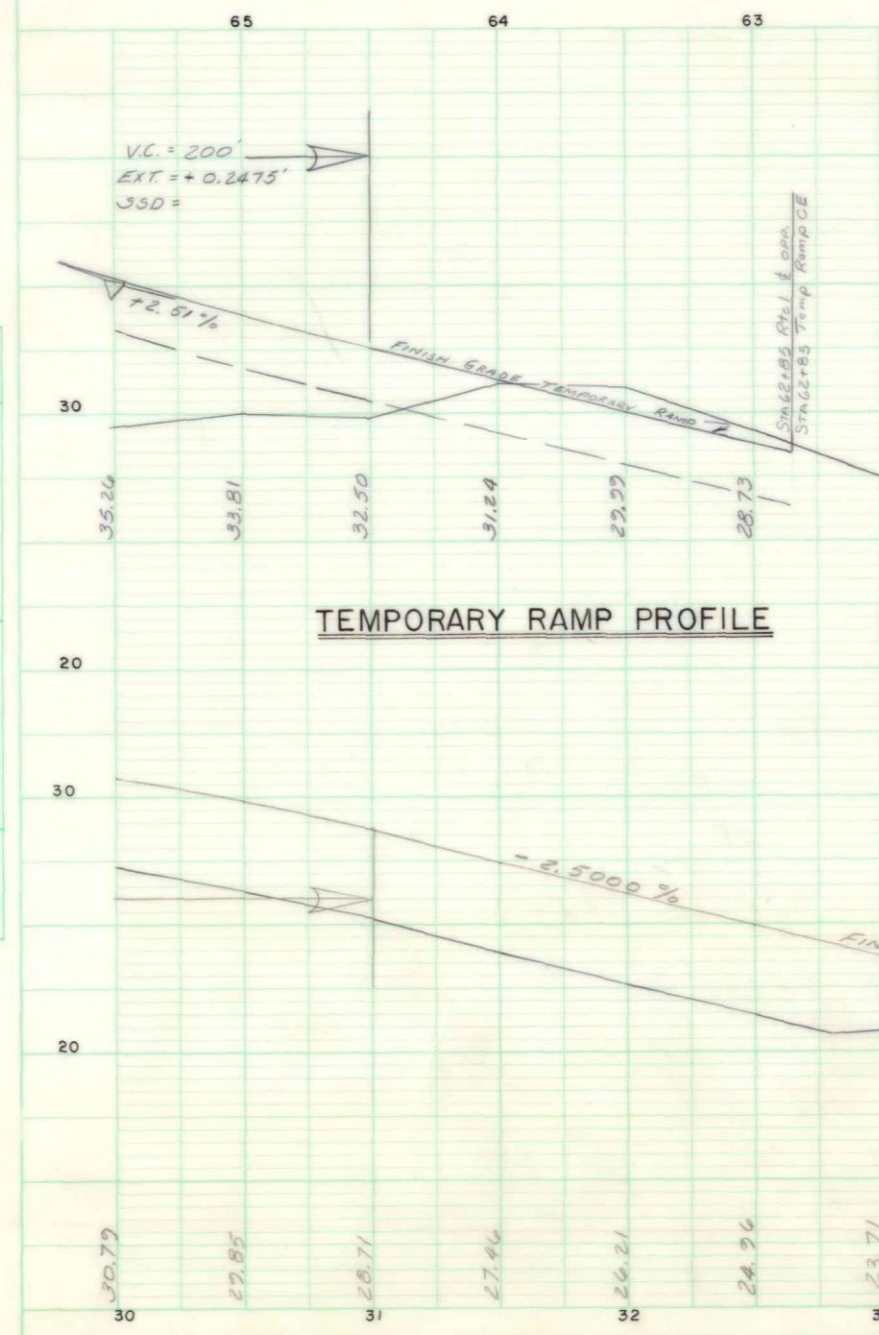
STA 34+79.30 SP-1 CE, 6'-10 1/2" RT
INSTALL 1-TYPE A-1 C.B. 13' DEEP
GRATE ELEV. AT CURB 19.55
STA 32+00 SP-1 CE, 6'-10 1/2" RT
INSTALL 1-TYPE A-1 C.B. 8' DEEP
GRATE ELEV. AT CURB 26.08
STA 32+00 SP-1 CE, 8'-10 1/2" RT
TO 24'-10 1/2" RT.
INSTALL 12" X 16' BCCMP
STA 32+00, 30° R
INSTALLED TYPE 'E' CATCH BASIN



STA 65+11, RTE 1 & LT.
INSTALL 14' METAL SLUICE
FROM OUTLET OF
24" RCP TO DITCH.

STA 59+50 RTE 1 & LT, 25'-6" LT. TO 33'-6" LT.
INSTALL 24" X 8' RCP
STA 65+01 RTE 1 & LT, 17'-10 1/2" LT.
INSTALL 1-TYPE A-1 CB 8' DEEP
GRATE ELEV. AT CURB 33.39
STA 65+11 RTE 1 & LT, 33'-9" LT.
INSTALL 1 TYPE B-1 CB 8' DEEP
GRATE ELEV. = 31.50

STA 65+01, C.B. 17'-10 1/2" LT. TO STA. 65+11, 33'-9" LT. RTE 1 &
INSTALL 12' X 16' R.C.P.
STA 65+11 RTE 1 & LT, 33'-9" LT. TO STA. 65+11 RTE 1 & LT, 81'-9" LT.
INSTALL 24" X 48' R.C.P.
STA 29+25, 90° R TO STA. 34+80, 66° R
INSTALLED 12" BCCMP, 1972



TEMPORARY RAMP PROFILE

RAMP SP-1 PROFILE

GUARD RAIL TYPE 3b - SINGLE RAIL

STA. 16+75 to STA. 29+30 RT. SP-1 CE
STA. 29+31 RT. SP-1 CE to STA. 52+13.5 LT. US RTE 1 &, 30' High, See Sheet # 56
STA. 66+25 to STA. 73+00 RT. TEMP. RAMP CE
STA. 69+25 to STA. 73+00 LT. TEMP. RAMP CE
STA. 65+05, 23' LT. to STA. 72+62.5, 32' LT. US RTE 1 &, 30' High, See Sheet # 56
STA. 20+69.03, 22.04' LT. to STA. 20+94.00, 21.00' LT. SP-1 CE

GUARD RAIL TYPE 3b - CIRCULAR - GREATER THAN 15 FT. RADIUS

STA. 67+66, 40.6' RT. to STA. 67+78, 37' RT. US RTE 1 & - 30' RAD. L=12.5',
STA. 20+57.14, 25.61' LT. to STA. 20+69.03, 22.04' LT. SP-1 CE. L=12.5', R=30'

TERMINAL ENDS - SINGLE RAIL

STA. 29+30, 8' RT. SP-1 CE
STA. 29+31, 12' RT. SP-1 CE
STA. 73+00 RT. TEMP. RAMP CE
STA. 73+00 LT. TEMP. RAMP CE
STA. 67+66, 40.6' RT. US RTE 1 &
STA. 20+57.14, 25.61' LT. SP-1 CE
STA. 20+94.00, 21.00' LT. SP-1 CE
STA. 65+04, 23' LT. US RTE 1 &

TWISTED END SECTION, GUARD RAIL, TYPE 3b

STA. 16+50 to 16+75 RT. SP-1 CE
STA. 66+00 to 66+25 RT. TEMP. RAMP CE
STA. 69+00 to 69+25 LT. TEMP. RAMP CE

GUARD RAIL, REMOVED AND RESET

STA. 67+78 ± to STA. 68+35 ± RT. US RTE 1 &

EXISTING GUARD RAIL TO BE REMOVED BY OTHERS

STA. 62+50 ± to STA. 67+78 ±, 32' RT. US RTE 1 &
STA. 52+13.5 ± to STA. 72+62.5, 32' LT. US RTE 1 &

NOTE:

THE WORK OF REMOVING LIGHT POLES AND FOUNDATIONS WILL BE ACCOMPLISHED BY THE LIGHTING CONTRACTOR IN COORDINATION WITH THE WORK OF THIS PROJECT.

POLES & FOUNDATIONS TO BE REMOVED:

STA. 56+10 LT. US RTE 1 &
58+50 LT.
60+30 LT.
63+40 LT.
64+50 RT.
65+70 LT.
66+85 RT.
68+00 LT.
70+30 LT.
72+60 LT.

TERMINAL CURB TYPE 1

STA. 20+90 to STA. 20+94, 21' LT. SP-1 CE
STA. 23+50 to STA. 23+54, 21' LT. SP-1 CE
STA. 29+27 to STA. 29+31, 8' RT. SP-1 CE
STA. 64+96 to STA. 65+00, 19' LT. US RTE 1 &
STA. 67+78 to STA. 67+82, RT. US RTE 1 &
STA. 29+31 RT. SP-1 CE to STA. 54+10 LT. US RTE 1 &
STA. 62+75 RT. US RTE 1 & to STA. 64+55 TEMP. RAMP CE
STA. 65+04 to STA. 68+20 LT. SP-5 (RTE 1)
STA. 65+04, 23' LT. to 38' LT.

RESETTING CURB TYPE 1

REMOVE
STA. 62+50 ± to STA. 68+35 ±, 28' RT. US RTE 1 &
STA. 50+50 to STA. 73+30 ±, 2' LT. US RTE 1 &
STA. 50+50 to STA. 72+80 ±, 28' LT. US RTE 1 &
RESET
STA. 62+50 ±, 28' RT. US RTE 1 & to STA. 64+50, 8' RT. TEMP. RAMP CE
STA. 67+82 ±, 33' RT. to STA. 68+35 ±, 28' RT. US RTE 1 &
STA. 50+50, 2' LT. to STA. 73+20, 8' LT. US RTE 1 &
STA. 50+50, 28' LT. to STA. 56+00.89, 36' LT. US RTE 1 &
STA. 65+00, 19' LT. to STA. 72+80 ±, 28' LT. US RTE 1 &
STA. 29+31, 8' RT. to STA. 38+27.67, 8' RT. SP-1 CE
STA. 20+94, 21' LT. to STA. 23+50, 21' LT. SP-1 CE

GUARD RAIL DELINEATOR POSTS

STA. 16+50 RT. SP-1 CE
STA. 20+57.14 LT. SP-1 CE
STA. 66+00 RT. TEMP. RAMP CE
STA. 69+00 LT. TEMP. RAMP CE
STA. 73+00 RT. TEMP. RAMP CE
STA. 73+00 LT. TEMP. RAMP CE
STA. 67+66, RT. SP-5

As Built 1972

PLAN
NO. 1
DATE
BY
SURVEYED
NOTE BOOK
ALIGNMENT CHECKED
BT. OF WAY CHECKED

PROFILE
NO. 1
DATE
BY
SURVEYED
NOTE BOOK
STRUCTURE NOTES CHECKED

